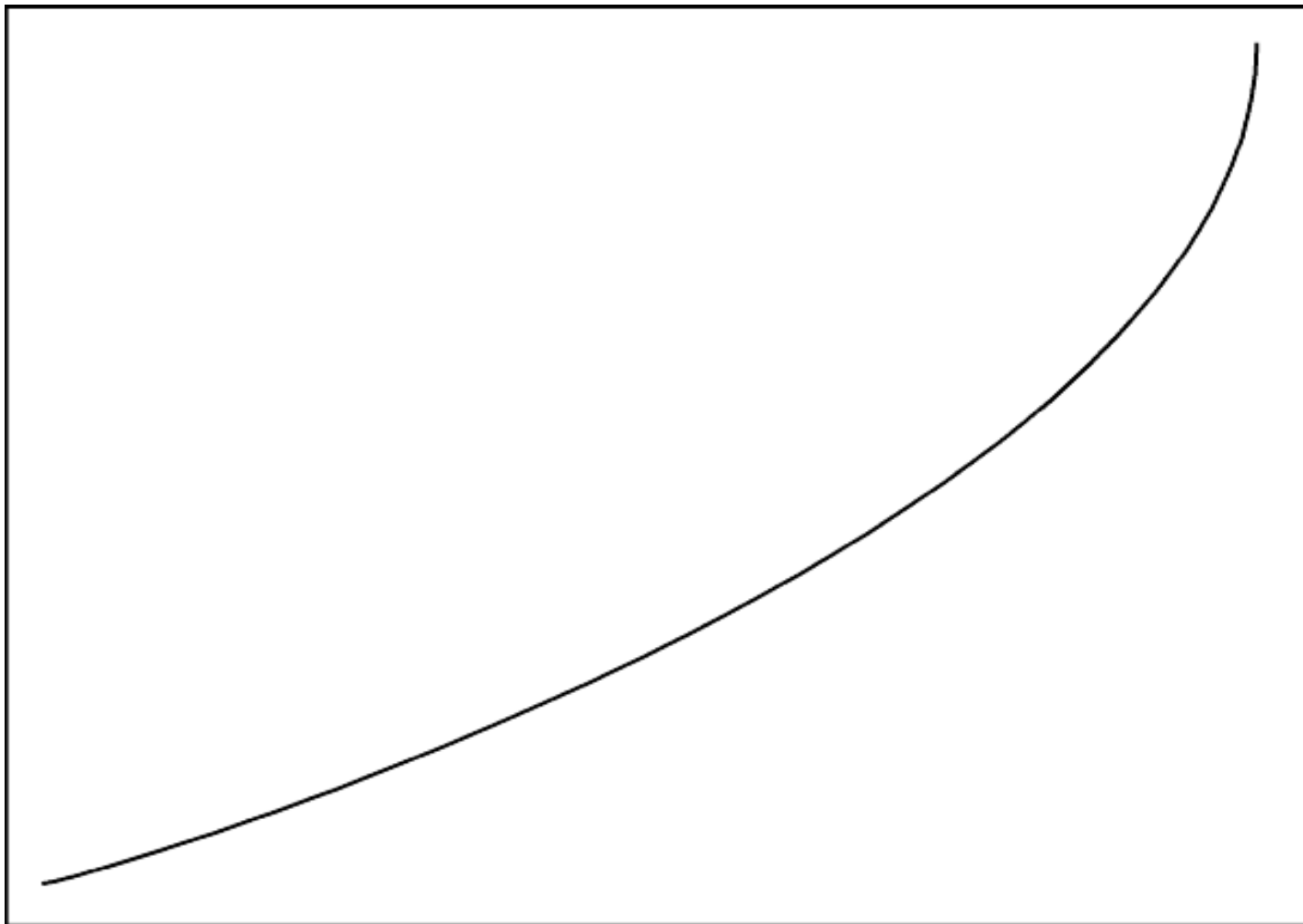


# Claustrum

for solo violin



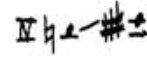
Robert Blatt

DESCRIPTION OF THE NOTATIONAL SYSTEM

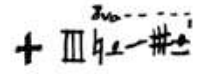


Switch to standard notation.

Each staff relates to a different string on the violin: I to I, II to II, and III to III. Only play the notes on the string indicated, and follow the dynamics as notated for each string.



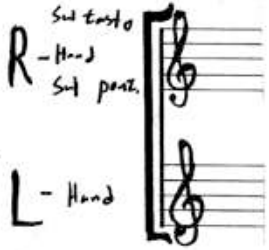
Hit the bow against the indicated string anywhere in the notated range of pitches



Continue hitting within the previously indicated range, but add the notated string and pitches.

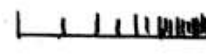


When a string is indicated without a range of pitches, play anywhere on the string



Switch to the notational system just described.

The top staff indicates the action of the right hand, whereas the bottom indicates the action of the left.



This bar indicates the general density of attacks while playing *col legno battuto*.



Ricochet bowing that moves from the frog to the tip of the bow.



Switch to the notational system just described.



Raise the pitch a quarter sharp.



Indicates both the distance and speed for circular bowing. When the curvy line reaches the top of the staff, play extremely *sul tasto*. When it reaches the bottom, play extremely *sul ponticello*. Gradually move from one extreme to the other at a speed indicated by the spatial proportions of the curvy line.



Raise the pitch three quarters sharps.



Lower the pitch one quarter flat.



Gradually transition from circular bowing to *col legno battuto*.

CLT

*Col Legno Tratto*.



Sustain the indicated note until a new one arrives or the horizontal beam disappears.

CLT  
ord.

Bow with half hair and half wood.



When a dash follows a note, sustain it until it disappears.

CLB

*Col Legno Battuto*.



Durations that slow down progressively.

B

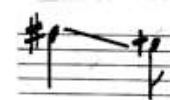
Bow on the bridge. The effect should be the same as bowing extremely *sul ponticello*.



Durations that accelerate progressively.



Gradually transition from one method of playing to another.



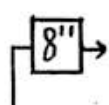
Glissando to and from the indicated pitches. Start the glissando instantly on the first note.



Irregular trill.



Let the string continue to ring as long as possible after the release of the bow.



From the start of this sign until the next similar sign, play for the indicated time. Obey the spatial proportions to determine the duration of events in this section.



Remain silent for the indicated time.

# Claustrum

for Solo Violin

Robert Blatt

## I

$\text{♩} = 64$

CLT → ord. CLT ord. → ord.

ord. → CLT ord. ord.

nat. → B  
CLT → CLT  
ord. → CLT

II



Right Hand *sul tasto*  
*sul pont.*

Left Hand

B  $8^{\text{va}}$

CLB  
 IV  $b e \# e$

*mf*

*sfz pp*

*mf*

R-Hand *sul tasto*  
*sul pont.*

L-Hand

B  $8^{\text{va}}$

IV  $b e \# e$

*mf*

*sfz pp*

*mf*

R-Hand *sul tasto*  
*sul pont.*

L-Hand

B  $11^{\text{va}}$

IV  $b e \# e$

*pp* *mf* *pp* *mf*

*sfz pp* *mf* *pp* *mf*

R-Hand *sul tasto*  
*sul pont.*

L-Hand

B  $11^{\text{va}}$

CLT  $8^{\text{va}}$  CLB  $4^{\text{va}}$

III  $b e \# e$  IV  $b e \# e$

*pp* *mf* *pp* *mf*

*sfz pp* *f* *mf* *pp* *mf*

R-Hand *sul tasto*  
*sul pont.*

L-Hand

B  $12^{\text{va}}$

III  $b e \# e$   $8^{\text{va}}$

*pp* *f*

*pp* *f*

R-Hand Sul tasto Sul pont.  
L-Hand

6<sup>th</sup> → B  
pp  
sfz pp  
B nat. ord. CLT  
IV & III

Detailed description: This system shows the first two staves. The right hand (R-Hand) is marked 'Sul tasto' and 'Sul pont.' and contains a treble clef staff with a whole note chord 'B' and a dynamic marking 'pp'. The left hand (L-Hand) contains a bass clef staff with a complex rhythmic pattern and dynamic markings 'sfz pp' and 'f'. Above the R-Hand staff, a box labeled '6<sup>th</sup>' with an arrow points to the right. A bracket labeled 'B nat. ord. CLT' spans across the R-Hand staff. A bracket labeled 'IV & III' is positioned above the R-Hand staff.

R-Hand Sul tasto Sul pont.  
L-Hand

3<sup>rd</sup> → 6<sup>th</sup> →  
pp  
f  
mp  
B  
sfz

Detailed description: This system continues the musical score. The R-Hand staff has a treble clef and contains a whole note chord 'B' with a dynamic marking 'pp'. The L-Hand staff has a bass clef and contains a complex rhythmic pattern with dynamic markings 'pp', 'f', and 'mp'. Above the R-Hand staff, a box labeled '3<sup>rd</sup>' with an arrow points to the right, followed by a box labeled '6<sup>th</sup>' with an arrow pointing to the right. A bracket labeled 'ord. CLT' spans across the R-Hand staff. A bracket labeled 'ord. CLB' spans across the R-Hand staff. A bracket labeled 'IV & III' is positioned above the R-Hand staff. A bracket labeled 'B' is positioned above the R-Hand staff. A bracket labeled 'sfz' is positioned below the R-Hand staff.

R-Hand Sul tasto Sul pont.  
L-Hand

4<sup>th</sup> → 3<sup>rd</sup> →  
pp  
f  
sfz pp

Detailed description: This system continues the musical score. The R-Hand staff has a treble clef and contains a complex rhythmic pattern with dynamic markings 'pp' and 'f'. The L-Hand staff has a bass clef and contains a complex rhythmic pattern with dynamic markings 'f' and 'sfz pp'. Above the R-Hand staff, a box labeled '4<sup>th</sup>' with an arrow points to the right, followed by a box labeled '3<sup>rd</sup>' with an arrow pointing to the right. A bracket labeled 'ord. CLT' spans across the R-Hand staff. A bracket labeled 'ord. CLB' spans across the R-Hand staff. A bracket labeled 'IV b e # e' is positioned above the R-Hand staff.

R-Hand Sul tasto Sul pont.  
L-Hand

5<sup>th</sup> → 4<sup>th</sup> →  
ff  
mf  
f

Detailed description: This system continues the musical score. The R-Hand staff has a treble clef and contains a complex rhythmic pattern with dynamic markings 'ff' and 'mf'. The L-Hand staff has a bass clef and contains a complex rhythmic pattern with dynamic markings 'mf' and 'f'. Above the R-Hand staff, a box labeled '5<sup>th</sup>' with an arrow points to the right, followed by a box labeled '4<sup>th</sup>' with an arrow pointing to the right. A bracket labeled 'ord.' spans across the R-Hand staff.

R-Hand Sul tasto Sul pont.  
L-Hand

12<sup>th</sup> →  
ff  
f  
CLB  
IV → V-I

Detailed description: This system continues the musical score. The R-Hand staff has a treble clef and contains a complex rhythmic pattern with dynamic markings 'ff' and 'f'. The L-Hand staff has a bass clef and contains a complex rhythmic pattern with dynamic markings 'ff' and 'f'. Above the R-Hand staff, a box labeled '12<sup>th</sup>' with an arrow points to the right. A bracket labeled 'ord. CLT' spans across the R-Hand staff. A bracket labeled 'CLB' spans across the R-Hand staff. A bracket labeled 'IV → V-I' spans across the R-Hand staff.

R-Hand Sul tasto Sul pont.  
L-Hand

4<sup>th</sup> → 4<sup>th</sup> →  
pp  
ff  
mp

Detailed description: This system continues the musical score. The R-Hand staff has a treble clef and contains a complex rhythmic pattern with dynamic markings 'pp' and 'ff'. The L-Hand staff has a bass clef and contains a complex rhythmic pattern with dynamic markings 'ff' and 'mp'. Above the R-Hand staff, a box labeled '4<sup>th</sup>' with an arrow points to the right, followed by a box labeled '4<sup>th</sup>' with an arrow pointing to the right. A bracket labeled 'ord. CLT' spans across the R-Hand staff. A bracket labeled 'CLB' spans across the R-Hand staff. A bracket labeled 'IV-I' spans across the R-Hand staff.

4

8<sup>11</sup> →

CLB → CLT → ord. → 5<sup>11</sup> →

R-Hand  
Sul tasto  
Sul pont.

L-Hand

ff mp mf

6<sup>11</sup> →

CLB → CLT → ord. → 3<sup>11</sup> →

R-Hand  
Sul tasto  
Sul pont.

L-Hand

sfz mp f sfz ff mp

nat.

6<sup>11</sup> →

ord. → CLT → ord. → 1<sup>11</sup> → 3<sup>11</sup> →

R-Hand  
Sul tasto  
Sul pont.

L-Hand

ff sfz

14<sup>11</sup> →

nat. pont. nat.

R-Hand  
Sul tasto  
Sul pont.

L-Hand

mp p mf p sfz p ff

4<sup>11</sup> → 8<sup>11</sup> →

CLB IV b e - # ± B B nat. ord. → CLT

R-Hand  
Sul tasto  
Sul pont.

L-Hand

pp f pp sfz

12<sup>11</sup> →

B → nat. CLB → IV b e - # ± K

R-Hand  
Sul tasto  
Sul pont.

L-Hand

f pp ff

III

8"

$\text{♩} = 48$

I

II *pp*

III *ppp* *p* *ppp*

*accelerando* →

I

II *pp* *mp* *pp* *mf*

III *p* *mf*

I

II *pp* *mp* *ppp* *pp* *mf*

III *p* *mf*

I *f*

II *p* *f* *pp* *mf*

III *pp* *mp* *pp* *f* *p*

Handwritten musical score for three staves (I, II, III). Above the staves, a tempo change is indicated:  $\text{♩} = 56$   $\text{♩} = 48$  *accelerando*. The score includes dynamic markings such as *ff*, *mf*, *mp*, *pp*, and *nat.* (natural). A key signature change to B-flat major is marked with a 'B' and a flat sign.

Handwritten musical score for three staves (I, II, III). This section continues the piece with various dynamics including *mf*, *f*, and *pp*. The notation features slurs and accents across the staves.

Handwritten musical score for three staves (I, II, III). Above the staves, a tempo change is indicated:  $\text{♩} = 64$   $\text{♩} = 48$   $\text{♩} = 56$  *accelerando*. The score includes dynamic markings such as *mf*, *f*, and *ff*. A key signature change to B-flat major is marked with a 'B' and a flat sign.

Handwritten musical score for three staves (I, II, III). Above the staves, a tempo change is indicated:  $\text{♩} = 72$   $\text{♩} = 48$   $\text{♩} = 64$  *accelerando*  $\text{♩} = 80$   $\text{♩} = 48$  *accelerando*  $\text{♩} = 96$ . The score includes dynamic markings such as *ff*, *f*, and *fff*. A key signature change to B-flat major is marked with a 'B' and a flat sign.



$\text{♩} = 48$        $\text{♩} = 96$   $\text{♩} = 48$        $\text{♩} = 96$  *rallentando* →  $\text{♩} = 48$        $\text{♩} = 64$

*accelerando* →  $\text{♩} = 80$   $\text{♩} = 56$       *accelerando*

$\text{♩} = 72$   $\text{♩} = 48$       *accelerando* →  $\text{♩} = 96$   $\text{♩} = 56$

*accelerando* →  $\text{♩} = 72$   $\text{♩} = 56$

*nat.* → *pont.* → *nat.*

System 1: Three staves (I, II, III) in treble clef with a key signature of one flat. Staff I contains a melodic line with slurs and accents, marked with a piano (*p*) dynamic. Staff II contains a sustained chord with a crescendo from *pp* to *mf*. Staff III contains a melodic line with slurs and accents, marked with a piano (*p*) dynamic. A *nat.* (natural) marking is present above the first staff.

System 2: Three staves (I, II, III) in treble clef with a key signature of one flat. Above the system are tempo markings: *accelerando* with a quarter note equal to 72, and *rallentando* with a quarter note equal to 56. Staff I features a *Sul tasto* marking, followed by a *nat.* marking, and then a *B nat.* marking. Dynamics include *ff* and *fff pp*. Staff II has a *ff* dynamic. Staff III has a *ff* dynamic. A *mf* dynamic is marked at the end of the system.

System 3: Three staves (I, II, III) in treble clef with a key signature of one flat. Above the system are markings for *rallentando* and *nat.* Staff I contains a melodic line with slurs and accents, marked with a piano (*p*) dynamic. Staff II contains a sustained chord with a piano (*pp*) dynamic. Staff III contains a melodic line with slurs and accents, marked with a mezzo-forte (*mf*) dynamic. A *pp* dynamic is marked at the end of the system.

System 4: Three staves (I, II, III) in treble clef with a key signature of one flat. Above the system are markings for *ord.* and *Sul tasto*. Staff I contains a melodic line with slurs and accents, marked with a piano (*pp*) dynamic. Staff II contains a sustained chord with a piano (*pp*) dynamic. Staff III contains a melodic line with slurs and accents, marked with a piano (*p*) dynamic. A *CLT* marking is present above the first staff. A *ppp* dynamic is marked at the end of the system.

Tempo markings:  $\downarrow = 72$  *rallentando* →  $\downarrow = 48$   
Performance instructions: *ord.*, *pont.*, *sul tasto*, *ord.*, *CLT*

Staff I: *ord.*, *ff*, *mf*, *pp*, *CLT*  
Staff II: *ff*, *pp*  
Staff III: *mf*, *ff*, *pp*

Tempo markings: *accelerando* →  $\downarrow = 56$  *rallentando*  
Performance instructions: *sul tasto*, *CLT*, *ord.*, *nat.*, *ord.*

Staff I: *CLT*, *ord.*, *mf*  
Staff II: *mf*  
Staff III: *mf*

Tempo marking:  $\downarrow = 48$   
Performance instructions: *sul tasto*, *CLT*

Staff I: *pp*, *CLT*  
Staff II: *pp*, *pp*, *pp*, *pp*, *pp*  
Staff III: *pp*, *pp*, *pp*, *pp*, *pp*

Performance instruction: *ord.*

Staff I: *ord.*, *mf*, *pp*  
Staff II: *mf*, *pp*  
Staff III: *pp*

IV

This handwritten musical score, titled "IV", is written for a string quartet. It consists of four systems of staves, each with a treble and bass clef. The score is heavily annotated with performance instructions and dynamic markings.

- System 1:** Features a 0.5" and 1" measure. The first staff includes a natural (nat.) marking and a dynamic shift from *mf* to *ff*. The second staff has a *CLT* (Crescendo/Libero Tremolo) marking and a dynamic of *ff*. A 16" measure is indicated above the system.
- System 2:** Includes a 0.5" and 1" measure. The first staff has a *fff* dynamic. The second staff has a *f* dynamic. The third staff has a *nat* marking and a *pp* dynamic. The fourth staff has a *fff* dynamic.
- System 3:** Includes a 1" and 2" measure. The first staff has a *f* dynamic. The second staff has a *fff* dynamic. The third staff has a *nat* marking and a *f* dynamic.
- System 4:** Includes a 4" and 8" measure. The first staff has a *fff* dynamic. The second staff has a *mf* dynamic. The third staff has a *nat* marking. The fourth staff has a *CLT* marking and a *ppp* dynamic.

The score is characterized by frequent use of *CLT* and *ord.* (order) markings, as well as various dynamic levels from *ppp* to *fff*. The notation includes slurs, accents, and specific fingering or bowing instructions.